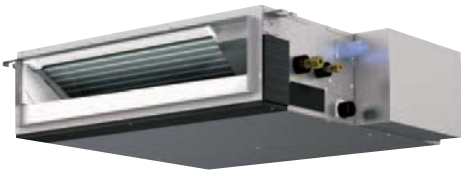


Mr. SLIM™

PEA-SERIES Ceiling Concealed

HEAT PUMP

- Variable Compressor Speed Inverter Technology
- Ozone-Friendly R-410A Refrigerant
- Significant Energy Savings up to 30%
- Super-Quiet Technology Only 23dB(A)
- Extra-Low Static Pressure of Only 0.02 in.WG
- Easy Maintenance with Self-Diagnostic Feature
- 3 Fan Speed Settings to Deliver Precise Comfort
- Hot Start System to Provide Warmth in the Beginning
- External Heater Interlock Function
- Auto-Restart after Power Failure
- Built-in High-Performance Drain Pump
- Long Pipe Length - up to 100 ft.
- Auto Change Over between Cooling & Heating
- Refrigerant Pre-Charged
- Ultra-Slim Body - less than 8" High
- Weekly Timer - up to 8 Patterns Each Day
- 1-Year Parts Warranty
- 6-Year Compressor Warranty



Indoor unit



Slim Smart Remote



Outdoor unit
PUZ-A18NHA

Indoor Unit Model		Outdoor Unit Model		PEA-A18AA	PUY-A18NHA
Capacity (Min ~ Max)	Cooling	Btu/h		8,000 - 18,000	
	Heating	Btu/h		8,000 - 20,000	
Power Input	Cooling	W		2,150	
	Heating	W		1,540	
SEER	Cooling			14.3	
EER	Cooling			8.4	
HSPF	Heating			10.0	
Capacity Control				Variable Compressor Speed	
Refrigerant				R-410A	
Power Supply		V, Phase, Hz		208-230, 1, 60	
Indoor	Dimension (W x D x H)	inch		46 7/8 x 27 3/8 x 7 7/8	
		mm		1190 x 700 x 200	
	Weight	lbs (kg)		62 (27)	
	Airflow (Lo-Med-Hi)	CFM Dry		423-529-635	
	Ext. Static Pressure	in. WG		0.02/0.06/0.14/0.20	
		Pa		5/15/35/50	
	Moisture Removal	Pints/h		3.26	
	Sound (Lo)	dB(A)		30	
	Max. Fuse	A		15	
	Min. Ampacity	A		1	
	Field Drain Pipe Size	O.D. in. (mm)		1 1/4 (32)	
Outdoor	Dimension (W x D x H)	inch		31 1/2 x 13 x 23 3/4	
		mm		800 x 330 x 600	
	Weight	lbs (kg)		97 (44)	
	Sound (Cool/Heat)	dB(A)		46/47	
	Max. Fuse	A		20	
	Min. Ampacity	A		13	
Pipe Size		Liq. x Gas in. (mm)		3/4 x 1/2 (6.35 x 12.7)	
Max. Height Difference		Ft. (m)		100 (30)	
Max. Pipe Length		Ft. (m)		100 (30)	



Changes for the Better

All test conditions are based on ARI 210/240.

Rating conditions: Cooling — Indoor: D.B. 26.7°C (80°F), W.B. 19.4°C (67°F); Outdoor: D.B. 35.0°C (95°F), W.B. 23.9°C (75°F)

Heating — Indoor: D.B. 21.1°C (70°F), W.B. 15.6°C (60°F); Outdoor: D.B. 8.3°C (47°F), W.B. 6.1°C (43°F)